

## FACTBOX

- Epicentre was 120km from Mexico City
- 7.1 on the Richter scale VIII on the Mercalli Scale
- There are many tectonic plates intersecting in Mexico. The Cocos Plate is being subducted under the North American Plate.



- Coincidentally occurred on the 32<sup>nd</sup> anniversary of the 1985 Mexico City earthquake that killed over 5,000 people.
- Mexico City is very susceptible to damage as it is built on a dried up ancient lakebed so the soft rocks can liquefy very easily and destroy foundations of buildings.
- Mexico is in the Ring of Fire.
- Some buildings were saved by having exterior steel brace frames.
- There was an 8.1 earthquake 11 days before but that damaged the city less.

## MEXICO 2017 19<sup>th</sup> September

A. 370 people were killed (including 228 in Mexico City) and 6,000 injured

B. Health declines especially in those living in poverty who may become homeless, this could impact them for decades.

C. It triggered an eruption of the volcano Popocatepetl and a church on the slopes of Popocatepetl collapsed during mass and killed 15 people

D. Over 12 aftershocks registered with the strongest reaching 4 on the Richter scale, these can carry on for weeks afterwards.

E. Lower agricultural output due to damaged land.

F. Conflict arises between security forces and civilians as the rescue efforts are called off in a collapsed textile factory and multi-storey building, this is because many rescue workers were suffering from respiratory problems from the gas leaks, dust inhalation and exhaustion.

G. Offices, schools, clothes factory, pharmaceutical lab and apartment blocks were flattened and cars were crushed.

H. Victims in poorer areas like Xochimilco have severely damaged water and electricity supplies.

I. New buildings have to be built to replace the ones which collapsed, this could take years

J. Economic impact between \$1bn to \$10bn

K Local residents, police and fire fighters were using their bare hands to dig through the ruins which had children stuck inside.

L. Volunteers run aid centres weeks after with donations dispatched out of parks, and churches.

M. The cost to rebuild the city is 48,000million Mexican Pesos (more than \$2,500 million)

N. Strong shaking for about 20 seconds

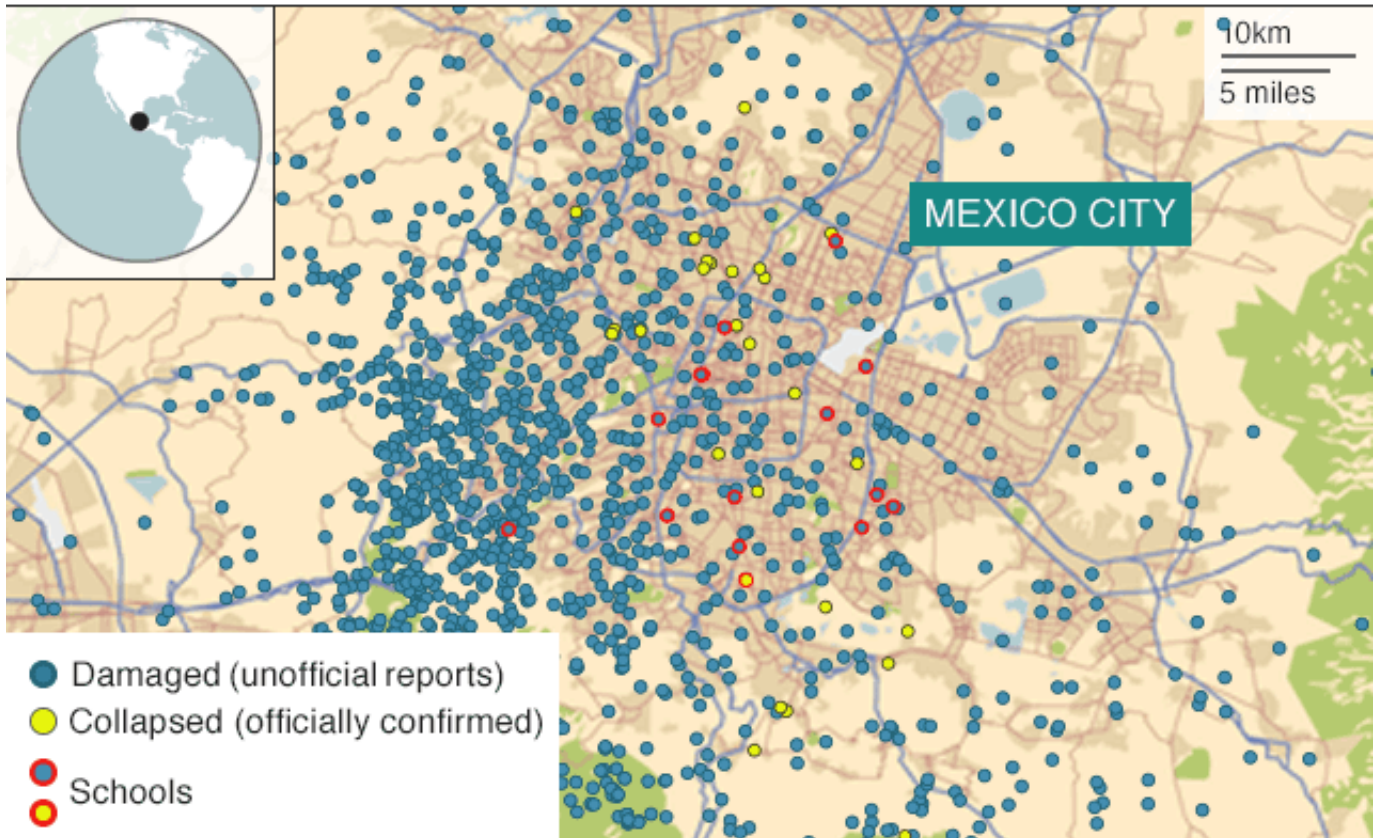
### KEY:

Primary Impacts =

Secondary Impacts =



# Damaged buildings in Mexico City



Source: Mexican government

BBC